

## QUESTIONS?

Contact:  
**Juliet Wunsch,**  
Chair Region 2

[jwunsch@wcupa.edu](mailto:jwunsch@wcupa.edu)



### INSIDE THIS ISSUE:

|                                      |   |
|--------------------------------------|---|
| Note from the Chair                  | 1 |
| Preparations                         | 1 |
| Finances and Production Registration | 2 |
| Scholarships                         | 3 |
| Irene Ryan Updates                   | 4 |
| Region 2 Leadership                  | 5 |
| Respondents                          | 5 |
| Website                              | 6 |
| Note from the Editor                 | 6 |

# KCACTF Newsletter

FESTIVAL 43, JAN 11-15, 2011

REGION 2

## Note from the Chair

Hi Everyone,

Welcome back to KCACTF Region 2. Festival plans for January 2011 are underway, and I am excited to introduce to you the newsletters which will be heading your way this fall. Each newsletter is designed to introduce you to different areas of KCACTF and festival opportunities for students and faculty. It is our hope that you will forward these to those students and faculty whom are interested in the range of opportunities festival has to offer, and post them in the hallways for greater student access.

In this newsletter you will find:

Preparations under way for January 2011, Towson University  
Where, when and what to expect.

Financial Considerations as you budget your school's participation in KCACTF for this academic year  
Program Reminder for entered productions

Changes to the Irene Ryan Acting Competition going into effect THIS FALL

Call for Faculty Production Respondents and Respondent Training Opportunities

Available Faculty Positions in Region 2 Leadership

Request for email updates for the regional email list

Future newsletters will contain content on Dramaturgy, Criticism, the National Playwriting Program, Directing Opportunities, the Irene Ryans, Workshops, the Fringe Festival, Student Volunteer Opportunities and other need to know items about heading to Towson University.

For full content about all things KCACTF and Region 2 related, please visit our website at: [www.kcactf2.org](http://www.kcactf2.org).

You may also direct any questions to me at [jwunsch@wcupa.edu](mailto:jwunsch@wcupa.edu).

I'm looking forward to another incredible year!!

--Juliet Wunsch, Region 2 Chair, KCACTF



## Preparations for Festival 43

Festival 43: January 11th-15th 2011

Towson University, Maryland

<http://www.towson.edu/main/abouttu/visitor/>

We are looking forward to another exciting festival. Once on campus, all buildings are within a reasonable walk. Hotels will be a short drive away, but parking and shuttles will be available.

## FINANCIAL CONSIDERATIONS FOR FESTIVAL and PRODUCTION REGISTRATION

### Production Registration

Production Registration is on-going, and you may register your season at your earliest convenience. (If you don't have titles, you can still pre-register!!) Please take advantage of the EARLY BIRD SPECIAL for the 2010-2011 academic year which is available to you between now and October 1<sup>st</sup>, 2010.

Before Oct. 1<sup>st</sup>, 2010:

Participating Productions: \$300

Associate Productions: \$225

AFTER Oct. 1<sup>st</sup>, 2010:

Participating Productions: \$350

Associate Productions: \$275

To register your production, go to [www.kcactf2.org](http://www.kcactf2.org), Production Registration (top bar) Please remember that we ask for registrations to be completed a minimum of one month prior to opening night, in order to secure an appropriate production respondent

### Grant Opportunity For Productions Participating in Regional Festivals

Last year, the Kennedy Center American College Theatre Festival graciously granted \$1,000 to each school invited to a regional festival to help offset production travel expenses. This year, the grants will be offered again. (The exact amount of the grants for 2011 are still to be determined).

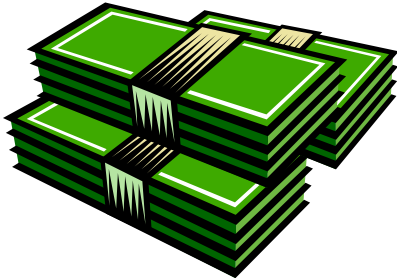
### Festival Registration Rates:

|                     |                     |   |
|---------------------|---------------------|---|
| Early Bird:         | \$65.00 per person. | Deadline: Monday, November 15, 2010       |
| Pre – Registration: | \$75.00 per person. | Deadline: Friday, December 17, 2010       |
| Registration:       | \$85.00 per person  | from December 18, 2010 - January 15, 2011 |

**Please note:** The tiered registration rates allow the region to safely predict the number of attendees and plan for the most exciting festival the region can afford. Due to this need, we adhere to these strict time-lines and will not be able to offer extensions, so please budget accordingly. Names and emails MUST be linked with EACH registration for it to be accepted.

**On-site costs** are still being determined, but on campus parking costs which will be around \$12 per week or \$6 per day, and hotel rooms are approximately \$120/night for a quad, plus hotel tax. (One hotel offers 2 bedroom suites at \$150 plus hotel tax, but these rooms also offer a pull out bed in a common space which means they can hold up to 6 persons should that be your school's preference). More specific details will be released as soon as hotels are ready to receive reservations.

## How Can You Afford **NOT** to Participate in KCACTF This Year?



If your school is thinking:  
**“With our budget, we can’t afford to enter  
 KCACTF this year.”**

**Here are some reasons to consider entering KCACTF:**

In this tight budget year, the Kennedy Center will be providing grants of up to \$1,000 to help support invited productions who are bringing their shows to Regional Festivals in all 8 regions.

KCACTF continues its policy of offering an “early-bird” discount to reward those who help regions plan by entering their productions early. This is a great way to save some costs on KCACTF entry fees.

It’s also important to remember all the benefits of entering an Associate or Participating production in KCACTF:

KCACTF provides peer response to every entered production, providing helpful dialogue about your work for your students and faculty; this exchange remains the true “heart” of the Festival.

Opportunities to enter and participate in KCACTF’s numerous programs and activities, including those in Acting, Directing, Playwriting, Design, Stage Management, Criticism, Dramaturgy, Theatre Scholarship, and more. These are outstanding programs which recognize and celebrate the excellent theatre work created by your students. In these economic times, these recognitions may be more important than ever.

Attendance and participation at your Regional Festival is an excellent opportunity for your students to be exposed to a variety of theatre productions, workshops, teachers, mentors, technologies, and ideas. These annual Regional Festivals are unique and vital forums for student growth and artistic development.

Maybe it’s time to start thinking,

**“Even with our budget, we can’t afford  
 NOT  
 to enter KCACTF this year!”**



## IRENE RYAN ACTING SCHOLARSHIPS

### **New Changes to The Irene Ryan Scholarship Audition going into effect THIS FALL!!**

Changes to the Irene Ryan Scholarship Audition rules regarding timing and musical accompaniment:

In an effort to model the Irene Ryan Acting Scholarship Auditions after professional auditions, there will no longer be a "disqualification" at any level of the Irene Ryan auditions due to time. Time limits will be enforced, and are limited to 3 minutes at the preliminary audition, 5 minutes at the semi-final audition, and 6 minutes at the final round of auditions. Much like a professional audition, actors will be stopped at the time limit at all levels. There will be no warnings on time, such as hand raising, paddle waving, etc. There is no grace period at any level; nor any disqualification.

Time management is a very important consideration in selecting material. While there is no longer any disqualification, actors are strongly encouraged to allow for room in their audition to fully develop the acting moments. It is a disadvantage to the actor to prepare an audition which requires the actor to rush to finish the material, or to risk having the most important moments go unseen, and is indicative of an unprofessional and ill-prepared audition. Time the performance carefully so that it is always within the required limits. The confidence, poise, and polish of outstanding auditions are the result of dedicated, concentrated rehearsal and astute coaching.

In the same manner, all musical accompaniment must now be live. No recorded accompaniment will be allowed. Remember, if a scene in the audition incorporates singing, the scene must be in dialogue or duet with the partner. The accompanist will not count as the partner (unless the accompanist performs as a character in the audition). It's strongly recommended that you provide your own accompanist if singing. This will allow you to prepare your audition in the most thorough fashion. Avoid a cappella singing as it is not the standard of professional auditions and puts the actor at a disadvantage. Please check your regional website for details regarding availability of accompanists at the regional festival.



## AVAILABLE POSITIONS IN REGION 2 LEADERSHIP

### Regional Vice Chair, Executive Position

A three year position, the vice chair supports the regional chair in the regional organization and festival planning, with the anticipation that they will become the regional chair at the end of their term. As this is an executive position, the applicant must apply and be approved by the National Executive Committee. It is required that the nominee have at least part-time affiliation with an accredited institution of post-secondary education within region 2, and supply appropriate letters of application as identified in the national handbook.

If interested in more information, please contact Juliet Wunsch, [jwunsch@wcupa.edu](mailto:jwunsch@wcupa.edu), at your earliest convenience.

### Regional Design, Technology and Management Vice Chair, Executive Position

A three year position, the vice chair supports the regional design chair in administering KCACTF design and technology activities in the region and the organization of the design and technology exhibit at regional festival, with the anticipation that they will become the regional design and technology chair at the end of their term. As this is an executive position, the applicant must apply and be approved by the National Executive Committee. It is required that the nominee have at least part-time affiliation with an accredited institution of post-secondary education within region 2, and supply appropriate letters of application as identified in the national handbook.

If interested in more information, please contact Juliet Wunsch, [jwunsch@wcupa.edu](mailto:jwunsch@wcupa.edu), at your earliest convenience.

## RESPONDENT INFORMATION

### **NEW RESPONDENTS WELCOME!!**

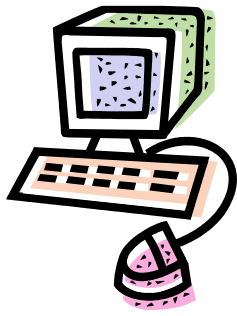
Responding is the foundation of communication in this region. It allows faculty members and professionals to get a sense of the quality of the productions mounted in region 2 and engages students and faculty in conversation regarding the production process, the life of an academic institution and career opportunities for students beyond the borders of their own institutions. Training sessions are available for respondents at regional festivals, as special events during the academic year, and one on one depending on individual schedules.

If interested in becoming a respondent, please contact Juliet Wunsch, [jwunsch@wcupa.edu](mailto:jwunsch@wcupa.edu)

### **RESPONDENT TRAINING OPPORTUNITY, This Fall at Montclair University:**

Want to learn more about responding? New to Region II? Or perhaps you've been with us for a while but haven't been responding?

Please join us at Montclair University in New Jersey on Sunday, November 21 for a morning response training session, lunch, a production of SWEENEY TODD, and to share in the response following the show. As this is a region 2 training opportunity, region 2 will be picking up the cost for travel and tickets. KCACTF is grateful to Montclair University for hosting this event. RSVPs are required. Please contact Elizabeth van den Berg via e-mail ([kcactf2@mcdaniel.edu](mailto:kcactf2@mcdaniel.edu)) for more information or to RSVP



We're  
on the  
web!

## REGIONAL MAILING LIST

We are updating our regional e-mail list and would like to include student e-mail leaders on our list. Please e-mail Juliet Wunsch at [jwunsch@wcupa.edu](mailto:jwunsch@wcupa.edu) with any new faculty or student leaders. Upcoming newsletters will spotlight different areas of our programming, so we'd love to update our e-mail list as soon as possible to ensure that everyone who wishes to receive our newsletter does. Newsletters will also be posted on our site after being e-mailed. Please feel free to forward this newsletter to anyone you think may be interested!



*Thank you for reading the KCACTF Newsletter!  
I'm so happy and thankful to be working with  
Juliet Wunsch and the other staff members in-  
volved with making our Region's KCACTF a  
great success! I hope to keep you informed and  
up to date with the latest in festival  
happenings!!*

*Douglas Atkins is a junior at West Chester  
University, majoring in Theatre with a Musical  
Theatre Concentration and minoring in Dance.*